

# Club Journal

November 2012

The magazine for all CIU members

75p



Bradley Wiggins with the Tour de France trophy about to draw the raffle.

## Wiggo's a draw at the club

Cyclist Bradley Wiggins attracted a crowd when he called at the Mildmay Club in North London, but sadly he wasn't able to enjoy a drink there.

The Tour de France Champion was busy taking part in a photoshoot for sportswear company Fred Perry and he famously doesn't drink on duty – though they did ask him to join their darts team.

Bradley, who is the front runner for BBC Sports Personality of the Year after adding Olympic gold to his stunning Tour victory, made the ultimate sacrifice during the summer when he gave up drink before the three-week race.

He has spoken of his love of beer, particularly Belgian beer, which he has been known to drink more than 15 bottles of in a sitting. He's also no stranger to club tradition as he proved in his victory speech on the Champs Elysees when his first words to the crowd were: "Quiet please, we're just going to draw the raffle numbers."

## MPs SEEK MEETING WITH HOME OFFICE

The Union is seeking an urgent meeting with Home Office ministers over two damaging and indiscriminate pieces of legislation.

The Coalition is proposing to tackle the problems caused by anti-social drinkers in our town and city centres by levying a charge on our clubs and by introducing a blanket ban on anyone selling alcohol between midnight and 6am. This is despite the recognition of police that CIU clubs provide places where drinking take place in a controlled environment.

The two measures, the Late Night Levy and Early Morning Restriction Orders (EMROs) were part of the 2011 Police Reform and Social Responsibility Act but have not yet been implemented. The Levy gives licensing authorities the right to charge more for late night licences to pay for additional policing. The Home Office states that councils will have the discretion to offer an exemption to premises such as country pubs, bingo halls and amateur sports clubs.

## Union opposes Levy and EMROs

The Government also recognises that there need to be exemptions from EMROs so will ensure that people can get a drink from hotel mini-bars and room service!

A full discussion on both issues took place at last month's meeting of the All-Party Parliamentary Group and it was resolved that the Group's Executive seek a meeting with ministers to ensure our clubs are exempt from this legislation. Union President George Dawson, who attended the meeting, said: "Politicians continue to praise our work in preserving communities and keeping drinking under control then they kick us in the teeth by including us in with the places that cause the trouble. "The Union and our supporters in Parliament will continue to work tirelessly to prevent what we consider to be unfair restrictions being applied to our clubs."

## INSIDE...

The efforts of the Edward VII WMC near Castleford have been rewarded with the building of a memorial to miners (pictured right) at the nearby Allerton Bywater Colliery.

**Full story and more pictures – Page 3.**

### Fly on der wall

A film about a Sheffield social club, made by a German documentary team in the 1960s, is being revived with special showings in London and Sheffield this month.

**Full story – Page 4.**

### Free racing offer

Satellite racing channel Racing UK is offering clubs a month's free trial membership.

**See page 18**



Union President George Dawson visited Burnley Miners Social Club where he presented Committee member Pat Healey with a Long Service Award and Michael Barry and Harry Pollard with Certificates of Merit.

Pictured (left to right) are: Alan Kennedy (Club Secretary); Karen Townsend (Assistant Secretary); Pat Healey; Tony Mitchell (Club President); Michael Woodvine CMD (Burnley & Pendle Branch Secretary); David McGlynn (Branch Executive); George Dawson CMD; Gordon Leighton CMD (Branch President); Michael Barry (Committee and Branch Executive member); Harry Jackson (Branch Vice-President) and Harry Pollard.

The Burnley Miners became nationally famous several years ago after a story in Club Journal revealing the club's members to be the biggest consumers of the French spirit Benedictine was followed up by the national papers – to the bemusement of the rest of the



country where Benedictine is virtually unheard of. The Miners is a very busy club with the largest membership in the area and on the same day as they were hosting the presentations for their long serving committee members, they were also holding their half-yearly General Meeting, reporting a very successful period; hosting the Burnley & District Concert Secretaries Federation meeting, and the Federation's Grand Show with six artistes appearing; holding a christening in a separate function room, as well as catering for all their "normal" customers in the various bars. And that was just in the afternoon!



A very special double presentation was made at Howden WMC near Goole.

Doncaster Branch Secretary Dave Gravel presented Norman Stevens (left) with one of the Union's special certificates to mark 50 years of service to the club while at the same time his wife Sheila received her 10-year Certificate of Merit.

## Proud and Honoured



Western Counties Branch President John Keenaghan (left) and Vice-President Dave Lowe (right) visited the West End Club in Chippenham and presented a Certificate of Merit to Committee member Eddie Lewkowicz and a Diploma marking 21 years' service to the Branch to Branch Secretary Mark Brewer.

Just to confuse everyone, Eddie and Mark switched certificates for the photograph so Eddie is the one in the suit holding the Diploma – Mark (in the white shirt) confirms drink may have played a part!



Durham Branch Secretary Keith Reay and President Mick McGlasham visited North Biddick Social Club in Washington for the presentation of a Long Service Award to Committee member Graham Speed and a Certificate of Merit to Bill Stangroom. Pictured (left to right) are Bill Stangroom, Keith Reay, Club Chairman Jim Todd, Branch Executive member Sid Smith, Mick McGlasham and Graham Speed.

## HAYES WORKING MEN'S CLUB LATE NIGHT CABARET

November 24th

UB42

BOY GEORGE  
EXPERIENCE  
BARNI SCOTT

PUMP LANE, HAYES, MIDDLESEX UB3 3NB  
SHOW £10 PER TICKET  
( OVER 18 ONLY )

Bar open until 1.00 am – Doors open 7.00 pm

Coach parties welcome by prior  
arrangement – please contact Secretary  
for information and tickets on:  
020-8573-1721

# Pit's passing marked by monumental sculpture



One of the badges sold by the Edward VII Club to raise money for the memorial.

A Yorkshire club has been the driving force in raising £30,000 for a memorial sculpture to those who lost their lives at a local colliery. The memorial, a sculpture in the shape of a mining cage, was unveiled on the site of the former Allerton Bywater Colliery, near Castleford. The pit closed in 1992 after 110 years in which

it claimed the lives of 87 men and boys.

The monument was the culmination of 20 years of planning. For the last two years The Allerton Bywater Miners Memorial Committee has held its meetings at the nearby Edward VII Club in the village. The club has supported the Committee and held a series of fundraising



The memorial with one of the pit tubs nearby.

events. Members also raised money by selling badges in the shape of a miners' oil lamp. The monument is the work of local artist and former miner Harry Malkin. Three of the four sides show miners crammed into cages, marching with their pit banners and carrying out underground roof-bolting. The last side depicts a Dosco – a huge machine used for ripping into the coal seam.

The names of all those who died at the colliery were read out at the opening ceremony and are listed on one of the pit tubs alongside Photographer Bob Clayden has worked alongside Harry Malkin and recorded the progress of his work. "A lot of communities have something like a wheel to mark where the pit was but this is something extra special."

(Bob Clayden Pontefract)

## Clubs both make a grand effort



Clubs in the North and the South have each raised £1,000 for life-saving causes.

Ten members of Denton WMC in Manchester raised more than £1,000 for Cancer Research UK by walking, jogging or running 5km in the all-women Race for Life at Tatton Park in Cheshire.

Pictured are Margaret Jackson, Jane Green, Melissa Marsden, Julie Young, Sheila Needham, Debbie Harrington, Sheila Harrington and Debbie McCallum.



Not on the picture are Beattie Wood and Anne Shipman. The ladies would like to thank all who sponsored the event.

The Angmering Club in West Sussex raised more than £1,000 for ECHO – the Evelina Children's Heart Organisation – which is part of Guy's and St. Thomas' NHS Foundation Trust in London.

The Trust treats hundreds of children born with serious cardiac disorders, the majority of whom need to undergo risky, life-saving open heart surgery. Many of

them need further treatment, life-long follow-up and regular medication to help them survive into adulthood and beyond.

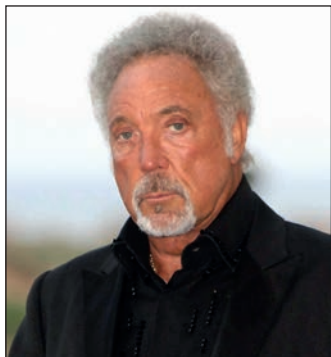
"Our thanks go to all those who gave up their spare time and donated prizes to help with the fund raising," said Club Secretary Colin Pallant.

Pictured left to right are Louise Bushby and her son Charlie, Colin Pallant, Jo Wilson from Echo, Steph Mead and Debbie Arter.

# Sir Tom's fowl play

# Dial House lives on in German film

The saga of Sir Tom Jones and the stolen chicken has taken a new twist. In previous issues we've told how the main raffle prize disappeared when there was a punch-up in a club during a performance by his band The Senators in the 60s. Despite protesting his innocence Sir Tom was barred for nearly 50 years by a non-Union club near Caerphilly but a couple of years ago it lifted its ban only for the singer to admit the club was right and he'd stolen the chicken all along. Now band founder Vernon Hopkins – who happens to have a book out – has returned to the club to hand back a chicken. "I can vividly remember the evening, it was a full house and Tom was magnificent. "To coin a phrase it's not unusual to witness a punch-up but this was no ordinary punch-up. It just went on and on, tables and chairs and pint glasses flying all over the place. We had to stop playing when they started fighting at the foot of the stage. "We started packing up our equipment like our lives depended on it, which they probably did. They were still fighting as we drove off. "Tom liked to lie down in the back of the van and I just remember this gruff voice saying, 'Guess who is going to have chicken tomorrow?' "



Tom Jones: chicken tonight

Two special screenings have been organised of a film made in the 1960s about a CIU club in Sheffield. German filmmaker Peter Nestler made the film "A Working Men's Club in Sheffield" about the Dial House Club in the city. (right) Nestler and his team spent a few weeks getting to know members and observing how club life provided a welcome relief from hard work in the steel mills before going on to make what these days would be called a "fly on the wall" documentary. The film is wonderfully evocative, its grainy black-and-white images giving us a glimpse into the past not only of a wonderful club that is now sadly gone but also into working class life. We see the crowds of clubmen and rows of pints lined up to quench their thirst. They laugh, smile, chat, sing and dance in their club. Such images are juxtaposed with those of men working in the harsh conditions of the steel forges. The film will be shown at the Goethe-



The Dial House, which was so named because it had a sundial above its front door.

Institut in London on November 9 at 7pm and at Showroom Workstation in Sheffield on November 11 at 3.30 pm. Peter Nestler, now 75, will be present to discuss the film.



## President in town



National President George Dawson presented a Distinguished Service Award to Bedworth Ex-Servicemen's Social Club Trustee Roland Dewis and a Certificate of Merit to Committee member Ian Trevitt.

Pictured (left to right) are Warwickshire Branch President John Kendall, George Dawson, Ian Trevitt, Roland Dewis and former National Executive member Brian Olnor, who is Club Secretary.

## Top man honoured

Northumberland Branch President Alan Hardy visited Throckley & District Social Club, known as the Bank Top Club and presented a Long Service Award to Treasurer George Miller.

Pictured (back row, left to right) are: Committee member Micky Cutts, Branch Executive member Graham Swarbrick, Club Secretary John Oliver, National Executive member Sid Hicks and Branch Executive members Rob Yeats and Steve Kell.

Front row: Heineken UK representative Omar Al Jumaili, George Miller, Committee member Maureen Bruce and Alan Hardy.

## Fundraiser for April

Duple Club in Blackpool are holding a special night on November 14 to raise money for the family of missing five-year-old April Jones. The fundraiser starts at 5pm and more than 20 artists have agreed to give their services free.

The April Jones Fund, which has been set up by the town council in April's home town of Machynlleth in North Wales, had already raised £20,000 when we went to press. A decision on how the money will be spent will be made by five-year-old April's family. April went missing in Machynlleth last month. A man has been charged with her murder.

# INSPIRING SUCCESS THROUGH INNOVATION



Among the presentations from Heineken in the UK were interactive demonstrations on how the Foster's Pourtal system produces the perfect pint and reduces waste, seminars on fridge layout and the launch of Strongbow Pear



**SUPPORT:** Heineken Business Development Manager Phil Docherty (pictured with Ken Green, South Yorkshire CIU Branch Secretary), works closely with the CIU and its affiliated members

More than 100 representatives from 35 clubs across South Yorkshire attended the latest in a series of Heineken Business Roadshows at Rotherham's New York Stadium.

The aim of the event was to give club representatives the opportunity to see new innovations from the company and to try some of them out first hand.

Heineken Business Development Manager Phil Docherty said: "Heineken is committed to supporting individual clubs in particular and clubland as a whole.

"During these difficult



economic times, a lot of clubs are struggling and we are in a position to offer the necessary support, promotions and market-leading brands to help their businesses succeed.

"To this end, the event gave us the chance to demonstrate some of the ways working in partnership with Heineken in the UK can be of benefit.

"We held advisory seminars on creating eye-catching backbar fridge layouts, discussions on how to draw new members through the doors and new product innovations that can help make significant savings at the same time as increasing sales and turnover.

"Visitors were shown the benefits of our Foster's Pourtal system, the way to

pour the perfect pint and reduce wastage and were able to try it for themselves.

"The launch of Strongbow Pear was a headline feature with tasting sessions running throughout the evening.

"We wanted to create an interactive environment for clubs to share ideas among themselves and we have had some very positive feedback with visitors telling members of our team that the event was eye-opening and that they would be taking a lot of what they saw back to their clubs.

"We also ran a number of promotions with a trip to the races and a double-door chiller being among the prizes. A comedian later rounded off proceedings.

"We are holding further Roadshows and we would urge representatives of our club customers to attend if at

all possible."

Ken Green, South Yorkshire CIU Branch Secretary, says: "The Roadshow was a great success with a good turnout and the lessons learnt were valuable ones.

"These events are a great opportunity for club representatives to get together and talk about what's on offer, taste speciality beers they may not be aware of and see new product innovations by Heineken first hand.

"While quite a number of



Secretaries and Committees are very active in running their clubs, not all of them know what goes on behind the bar, so giving them a chance to see how a perfect pint is poured, for example, and trying it themselves gives them something to take back with them and train up their staff where required."



● If you would like to find out more about the benefits your club could enjoy by trading with HEINEKEN in the UK or to arrange a meeting, please contact **PETER USHER**, Buying Group Director on 07831 840330 [peter.usher@heineken.co.uk](mailto:peter.usher@heineken.co.uk)



Committed to *your* club...

Ring Peter Usher on 07831 840330

# TAKE CARE WHEN DEALING WITH NEW PARENTS AND ADOPTION

Women employees have had statutory maternity rights for many years. Fathers and adoptive parents now also have statutory rights to paternity leave and adoption leave.



In addition to maternity, paternity and adoption rights, there has been an increasing recognition that all employees, not just those with children, need to achieve an acceptable work-life balance. Clubs should remember other important family-friendly measures, including the rights to unpaid parental leave, to time off for emergencies involving dependents, and to request flexible working. Changes to maternity, paternity and adoption rights by the present government have included:

- An extension of Statutory Maternity Pay (SMP), Maternity Allowance (MA) and Statutory Adoption Pay (SAP) from six months to nine months.
- Additional Maternity Leave (AML) for all working mothers regardless of length of service.
- Optional Keeping in Touch days (KITs) to give employees the chance to go to work, to undertake training and keep in touch for up to 10 days without losing their right to maternity pay.

• An extension of paternity leave providing

**By Andrew Dane  
 The Business Medic**

up to 26 weeks to care for the child if the mother returns to work before using her full entitlement to maternity leave. This effectively gives mothers the right to transfer a proportion of their paid leave to their partner.

**Proposals to further extend paid maternity and adoption leave to 12 months have been abandoned for the time being.**

There are three stages of maternity leave:

- **Ordinary Maternity Leave (OML):** All pregnant employees are entitled to 26 weeks' OML – there is no qualifying period. This can start from the beginning of the eleventh week before the baby is expected. The allowances payable are SMP or MA (see below) and the paid period now extends into part of the additional maternity leave period (see below).
- **Compulsory leave:** This is a period of two weeks immediately after giving birth during which the woman is not permitted to work. This is part of the ordinary maternity leave period, not additional to it.
- **Additional Maternity Leave (AML):** This begins from the end of the OML and is for a period of a further 26 weeks, some of which is unpaid.

The woman must provide her employer with details of the week the baby is expected and the start date of her maternity leave. The employer must respond to this notification within 28 days and state the date by which

the woman is expected to have returned to work after she finishes her full maternity leave entitlement – usually the end of her AML unless she chooses to return at an earlier date.

Mothers who qualify for AML are essentially entitled to up to 39 weeks' SMP. To qualify they must:

- work for an employer who is liable (or would be liable but for low earnings) to pay the employer's share of Class 1 National Insurance contributions
- have average weekly earnings in the eight weeks up to and including the qualifying week at or above the lower earnings limit for the payment of National Insurance contributions
- have 26 weeks' continuous service with her employer assessed at the 15th week before the week the baby is due. The first six weeks of SMP is paid at 90% of average weekly earnings and the remainder at the lower statutory level (currently £124.88 per week or 90% of the average weekly earnings if this is lower). SMP rates are normally increased in April each year.

These women may also qualify for MA: this is based on their recent employment and earnings record and is a state benefit which is payable for 39 weeks. To qualify, a woman must:

- be employed but not qualify for SMP, or be self-employed, or recently employed
- have been employed or self-employed on at least 26 weeks of the 66 weeks ending with the week before the expected week of childbirth
- earn at least a specified amount per week on average in any 13 weeks in the test period (currently £30)

The rules covering non-cash benefits applicable during maternity leave are complex but essentially women are entitled to flexible working that takes account of them having young children. Less favourable treatment of a woman who is pregnant, for example by changing her terms of employment or dismissing her, is a form of sex discrimination and may make an employer liable for an unlimited claim for damage.

It is impossible to cover all aspects of this subject in an article of this length so clubs should check the Government website

[www.gov.uk](http://www.gov.uk).

The **co-operative** bank  
 good with money

## We're right on cue when it comes to cash

Our **Business Current Account – Cash Tariff** offers competitive rates plus the convenience of paying in cash at the Post Office®.

To find out more  
**0800 0282 282**  
 Lines open 8.30am to 5pm  
 Mon to Fri ref: 39502  
[co-operativebank.co.uk/business](http://co-operativebank.co.uk/business)



**ANDREW DANE,**  
 our employment law expert, would welcome your questions, which should be addressed to  
 The Editor,  
 Club Journal,  
 CIU,  
 253-254  
 Upper Street,  
 London N1 1RY  
 or emailed to  
[cj@powdene.com](mailto:cj@powdene.com)

The Co-operative Bank is authorised and regulated by the Financial Services Authority (No. 121885), subscribes to the Lending Code and the Financial Ombudsman Service and is licensed by the Office of Fair Trading (No. 006110). The Co-operative Bank p.l.c., P.O. Box 101, 1 Balloon Street, Manchester M60 4EP. Registered in England and Wales No. 990937. Calls may be monitored or recorded for security and training purposes. For BT customers, calls to 0800 numbers are free. Call charges from other providers may vary and you may wish to check this with your service provider.

# Everything you need to know about PAT

**What is Portable Appliance Testing?** Portable appliance testing (PAT) is the term used to describe the examination of electrical appliances and equipment to ensure they are safe to use. Most electrical safety defects can be found by visual examination but some types of defect can only be found by testing. It is essential, however, to understand that visual examination is an essential part of the process because some types of electrical safety defects can't be detected by testing alone.

**I've been told that, by law, I must have my portable electrical appliances tested every year. Is that correct?**

A relatively brief user check, (based upon simple training and perhaps assisted by the use of a brief checklist), can be a very useful part of any electrical maintenance regime. More formal visual inspection and testing by a competent person may also be required at appropriate intervals, however, depending upon the type of equipment and the environment in which it is used.

**How frequently do I need to test my electrical appliances?**

The Electricity at Work Regulations 1989 require that any electrical equipment that has the potential to cause injury is maintained in a safe condition. However, the Regulations do not specify what needs to be done, by whom or how frequently (i.e. they don't make inspection or testing of electrical appliances a legal requirement, nor do they make it a legal requirement to undertake this annually). The frequency of inspection and testing depends upon the type of equipment and the environment it is used in. For example, a power tool used on a construction site should be examined more frequently than a lamp in a hotel bedroom. For guidance on suggested frequencies of inspection and testing, see the HSE publication "Maintaining portable and transportable electrical equipment".

**Do I need to keep records of testing and should I label any appliances tested?**

There is no legal requirement to label equipment that has been inspected or tested, nor is there a requirement to keep records of these activities. However, a record and / or labelling can be a useful management tool for monitoring and reviewing the effectiveness of the maintenance scheme – and to demonstrate that a scheme

exists.

**Do I need to test new equipment?**

New equipment should be supplied in a safe condition and not require a formal portable appliance inspection or test. However, a simple visual check is recommended to verify the item is not damaged.

**I have been told that I have to get an electrician to do portable appliance**

**testing work. Is that correct?**

The person doing testing work needs to be competent to do it. In many low-risk environments, a sensible (competent) member of staff can undertake visual inspections if they have enough knowledge and training. However, when undertaking combined inspection and testing, a greater level of knowledge and experience is needed, and the person will need:

- the right equipment to do the tests
- the ability to use this test equipment properly
- the ability to properly understand the test results

**Is Portable Appliance Testing (PAT) compulsory?**

No. The law simply requires an employer to ensure that their electrical equipment is maintained in order to prevent danger. It does not say how this should be done or how often. Employers should take a risk-based approach, considering the type of equipment and what it is being used for. If it is used regularly and moved a lot e.g. a floor cleaner or a kettle, testing, (along with visual checks), can be an important part of an effective maintenance regime giving employers confidence that they are doing what is necessary to help them meet their legal duties. HSE provides guidance on how to maintain equipment including the use of PAT. If you need further information on the above subject, please contact your Branch Office.



**Burnley & Pendle Branch Secretary MICHAEL WOODVINE is a qualified electrician and was in charge of maintenance for a major vehicle parts manufacturer. He has compiled this question-and-answer guide to Portable Appliance Testing with the help of information from the Health and Safety Executive (HSE) website.**

## You MUST send in returns

It is imperative for clubs to register Annual Returns each year with the Financial Services Authority.

The FSA have advised that the submission of Annual Returns is a basic registration condition. Failure to submit Annual Returns will result in a substantial fine and/or cancellation of its registration. There can be no re-registration or re-instatement once a club has been de-registered.

There are several implications in being struck off the FSA register. The club would lose its "limited liability status" exposing officers and members to personal financial risk. The club would lose its corporate status and become an unincorporated club. Without that corporate status, the club cannot sue or be sued in its own name – so any legal action against the club could be against a named officer.

The FSA do write to every club each year. Not only is a blank Annual Return Form enclosed (with a freepost envelope) but clubs are advised at that time of the consequences of non-submission.

**Maureen Ross**  
Head of Rules

## Club Journal

Official Journal of the CIU

253-254 Upper Street,  
LONDON N1 1RY.

Telephone: 020 7226 0221

Fax: 020 7354 1847

Email: [info@wmciu.org](mailto:info@wmciu.org)

Website: [www.wmciu.org.uk](http://www.wmciu.org.uk)

Personal subscriptions:  
£7.50 per year

**Editor:**

**Ken Roberts**

**Editorial Office:**

Powdene Publicity, Unit 17,

St Peter's Wharf,

NEWCASTLE NE6 1TZ.

Telephone: 0191 265 0040

Fax: 0191 275 2609

**News:**

**Chris Brewis**

Email: [cj@powdene.com](mailto:cj@powdene.com)

**Advertising:**

**Mike Lyon**

Email: [info@powdene.com](mailto:info@powdene.com)

Tel: 0191 488 7142

## 150th Conference

Next year's CIU Conference, or Annual Meeting to give it its official title, will be held on Saturday, April 6. The Conference, which will be the Union's 150th, will again be held at the Winter Gardens in Blackpool.



for clean beer & clear profit!

**Do you need to reduce your costs?**

Can you really afford to continue pouring beer down the drain?

**STOP, READ, CALL FREE**

Have you heard of CellarBright?

Have you seen our ad every month in the Club Journal?

Have you nearly picked the phone up to call us?

Are you still wasting thousands on beer wastage each month?

If the answer is one of the above then you seriously need to call us. We have been a National Accounts Company with the CIU for 18 months now and have worked with many social clubs, pubs, hotels and a brewery.

There has never been a time like now, to cut costs in your club, you probably have made many and overlooked the beer wastage due to line cleaning.

There will be various reasons for this, mainly the investment costs, well, think again, we have many flexible options to make it affordable, so, call now for a FREE no obligation survey.

Telephone: 0800 699 0268

Email: sales@cellarbright.co.uk

www.cellarbright.co.uk

## NATIONAL ACCOUNT SUPPLIERS LIST

Here is a list of the current Union-recommended suppliers/ National Account holders:

### Access2All

(H&S/Disabled access advice)

Mick Rickwood:

07862162276/01912092906.

michael@access2all.co.uk

### Auditel

(utility consultant)

Giles Branson: 07947039382.

Giles.Branson@auditel.co.uk

### Aon

(Club Insurance Services)

Andy Kitchener: 07989984260.

andrew.kitchener@aon.co.uk

Stuart Hall: 07983576565.

stuart.hall@aon.co.uk

Gareth Butler: 07779702240.

gareth.butler@aon.co.uk

### Bissett Kenning & Newiss

(rating advisors)

Cathrine Moore: 0191272

5551.

Cathrine.moore@bissett-

kenning.co.uk

### BOC Sureserve

(gas)

Richard Nixon: 07768193174.

Richard.nixon@boc.com

### Co-operative Bank

Paul Davies: 07803212331.

Paul.davies@cfs.coop

### Cellarbright

(line cleaning)

Hance McGhie: 07740367029.

hmcghie@cellarbright.co.uk

### Coventry Silvercraft

(trophies etc).

Marie/Andy Oakley:

02476223374.

andy@coventry-silvercraft.

co.uk

### Dransfields

(gaming machines/lottery

machines and tickets)

Alan Jackson: 01132 444 555.

Alanjackson@dransfieldsltd.

co.uk

### Envtec Services Limited

Phil Towndrow 01455 821177

philt@envtecservices.co.uk

### Heineken UK

Peter Usher: 07831840330.

peter.usher@heineken.co.uk

### Thompson & Bryan

(loss assessors and valuers)

Derek Lamb: 0121 428 4000

### Walkers Snacks

(crisps and soft drinks)

Angie Sparling: 07740640425.

Angie.sparling@pepsico.com

## Make more money with a Dransfields B3A Machine!



Exclusive to private members clubs

Did you know that a category B3A machine is exempt from all taxes?

- NO VAT TO PAY
- NO LICENCE DUTY
- GUARANTEED NO-RISK TRIAL!
- £500 TOP PRIZE  
Compete with the bookmakers' machines!
- PROVEN EARNING RECORD  
B3A machines are earning tax-free profits for clubs all around the UK.

GUARANTEED RAPID RESPONSE SERVICE FROM LOCAL DEPOTS – WHEREVER YOU ARE!



Call us now on 0845 094 1495



**Dransfields**  
LOCAL SERVICE, NATIONAL STRENGTH  
www.dransfields.com

Recommended supplier to the Club & Institute Union, Association of Conservative Clubs, National Union of Labour & Socialist Clubs, National Association of Railway Clubs.



# Club queens it by saving £6,000

Two of the top energy suppliers, British Gas and npower have already announced yet another hike in fuel prices due to come into effect this month, with rises expected to average 8.8% for gas and 9.1% for electricity. Energy bills are normally clubs' second largest overhead after staff but this winter's price increases may only worsen those statistics – in some cases forcing energy bills up to become a club's biggest outgoing.

Queens Social Club in Sheffield are today breathing a sigh of relief that they eliminated their old gas heating in favour of a state-of-the-art warm air heating system from Envtec Services Ltd – especially as they saved more than £6,000 in 2011.

Club Secretary Ian Thomas said:

"Our old gas boiler system caused us nothing but problems, it cost us a fortune to run yet members were still cold. We had to heat the whole club even when we were only using a proportion of it.

"In fact our concert room was unbelievable; we had to switch the heating on at 8am to ensure that it was warm enough for the evening. For a short time this forced us to shut it down completely which doesn't make good business sense by anyone's standard. "As we're part of the CIU we heard of Envtec Services and we asked them to come



Envtec energy adviser Baly Sheil.

to the club and advise us on how we could save money. Envtec's Baly Sheil provided the Committee with a free detailed energy report and helped us to apply for energy-efficient funding from the Carbon Trust which we qualified for and were accepted. "Envtec replaced all of our old fashioned lighting and put in a great heating system

– now the concert room is warm in just five minutes. The best part of all is because the system is so energy efficient the difference between our 2010 and 2011 balance sheet shows a saving of £6,540.

"The improved comfort for our members and the savings have

made such a difference to us. My advice to other clubs is not to worry away in silence with huge fuel bills but instead call Envtec Services for a free survey. It really worked for us."



## Is this your club?

If you can identify with the above or any of the following questions call National Accounts Supplier Envtec Services on 01455 82 11 77.

- Are you genuinely concerned about already high energy bills as well as the reported winter increases?
- Do you have to heat the whole club when using only certain rooms?
- Do you have equipment over 5 years old?
- Are you spending more than £8,500 on Gas and Electric?

## No half measures.



### Insurance for CIU clubs

Our new specialist insurance for CIU clubs includes a number of updated risk assessment tools. These are designed to help you reduce the risk of a claim, and avoid yearly premium increases.

To make the most of these tools, our experienced Client Managers are on hand to ensure you get the policy that best suits your needs.

Speak to one of our Client Managers today

0845 287 2539

licensedtrades.aon.co.uk



Your Club, Your Insurance

Opening hours Monday – Friday, 9am – 5pm. Maximum call charge from a BT landline is 5p per minute. Calls from other networks may vary. Calls may be recorded. CIU Insurance Services is a part of Aon Limited. Aon Limited is authorized and regulated by the Financial Services Authority. Calls may be monitored or recorded. Aon Limited Registered Office, 8 Devonshire Square, London EC2M 4LL. Registered No. FN409311.2011

## ENERGY PRICE HIKES SET FOR WINTER

With gas and electricity prices reported to be increasing again this November, the question on every club's lips is "Can we afford it"? Find out today if there is a more cost-effective way to heat and cool your club.

**With our help these CIU Clubs continue to make SUBSTANTIAL SAVINGS:**

**Bishop Stortford Social Club Saving £20,000**

**Oscott Social Club Saving £6,000**

**Nottingham Oddfellows Saving £8,858**

**Cannock Social Club Saving £8,000**

**Queens Social Club Saving £6,540**

**ENERGY EFFICIENCY FUNDING NOW AVAILABLE, BROUGHT TO YOU BY CARBON TRUST & SIEMENS**

Call Envtec Services, your CIU approved national accounts supplier today on **01455 821177** or visit [www.envtecservices.co.uk](http://www.envtecservices.co.uk) for further information



# A CLUB THAT'S MADE A N

**Peeks**

packed **FULL** for  
**Christmas**

- Decorations • Novelties
- Trees • Crackers
- Fancy Dress...

...and **SOOO**  
**much MORE!**

order  
anytime  
online!

**www.peeks.co.uk**  
tel: 01202 489489 fax: 01202 489400

Like f

East Dene WMC celebrate their 75th anniversary in March next year although the club's not near a dene and it's been in the CIU in one form or another since 1911.

The reason for both those misnomers lies in the club's chequered history. It has twice gone bankrupt and in 1938 the reconstituted club's committee were looking for a new name when a commercial traveller called in and said his last port of call had been the East Dene Club in Doncaster Road, Rotherham.

After he'd gone a member suggested: "If there's two clubs with a Doncaster Road address, let's call ourselves that and maybe they'll get some of our bills." Whether this is true or not, it seems to have worked as the club has never looked back and has just built a stunning new foyer out of its own funds. The first thing that strikes you when you enter the club through the automatic sliding door is how clean and fresh everything is. "Our cleaners do a fantastic job in keeping this club spotless and it's something we as a Committee take great pride in," says Secretary Steve Dowle. "Visitors often comment on how nice and clean the club is. "It's very important to us that if someone comes to our club that it is clean. There's so much more competition these days,



The club's snooker room has some spectacular trophies. Right: Steve Dowle and Michael Jeffers are pictured with Committee members (left to right): Treasurer Tony Smith, Lewis Watson, Kenny Owen, David Price and Colin Eastwood.



The Mayor of Barnsley, Coun. Dorothy Higgin Secretary Steve Dowle with a plaque to mark the Month, watched by South Yorkshire Branch Ken Green (left) and Club President Michael.

people don't want to visit a club that is shabby. Consequently the Committee has always adopted a policy of continuous refurbishment."

The latest work on the club has cost £112,000 and as well as the new foyer there are new toilets including disabled toilets. The club already

**Club Journal**  
**Featured Club of the Month**  
**Barnsley East Dene**  
**Working Men's Club**

**Barnsley East Dene**  
in Doncaster Road, Barnsley  
is part of the South Yorkshire  
Beers: Heineken UK, Carlsberg  
Facebook: East Dene



**HEINEKEN**  
congratulate  
**BARNSELY EAST DENE  
WORKING MEN'S CLUB**

FOSTER'S JOHN SMITH'S STRONGBOW

For orders and enquiries call  
**FIRSTPOINT 0845 878 7074**

**Dransfields**  
LOCAL SERVICE, NATIONAL STRENGTH  
www.dransfields.com  
congratulate  
**BARNSELY EAST DENE  
WORKING MEN'S CLUB**  
**Club Journal Club of the Month**  
Call us now on **0845 094 1495**

# NAME FOR ITSELF



igginbottom, presents Club mark being featured as Club of Branch Secretary Michael Jeffers.



The ramp leading to the front door has been widened giving wheelchair access to the club's stunning new foyer (right).



had a ramp leading to the front door and this has now been widened to give improved wheelchair access.

## Journal's Club of the Month: East Dene Men's Club

East Dene WMC  
Barnsley S70 1UD  
Yorkshire Branch  
UK, Molson Coors,  
Berg-Tetley  
East Dene WMC (Barnsley)



Inside the club is all on one level with a huge concert room, a games room and a pub-style snug. The concert room, which can hold 300 people, is kept busy with old time dancing on Monday evenings, a slimming club on Tuesdays, bingo on Wednesdays and Fridays, members' private functions on Saturdays, and, live music on Sunday nights. The club also runs regular events in support of local charities such as the local Hospice and the Alzheimer's Society as well as a national charity. Last year £2,400 was raised for Help for Heroes and this year the Yorkshire

Air Ambulance is being supported. The games room has two full-size snooker tables including one that dates back to 1892 and originally belonged to the nearby St Peter's Church. They are also used for the rare sport of table bowls, where small bowls with a similar bias to lawn bowls are rolled down a chute onto the table.

A spectacular collection of trophies pays homage to the club's sporting interests with some of the largest being for women's darts. There are also spectacular trophies for fishing – the club has both freshwater and sea angling sections – and for snooker from Heineken UK.

Steve would like to place on record that Heineken's recently-retired Mike Scanlan has been a great help to the club as have Brett Powell from CIU Insurance Services and South Yorkshire Branch Secretary Ken Green, who has given invaluable advice on some recent sensitive issues.

Steve is also grateful to the support he has from President Michael Jeffers, long serving Treasurer Tony Smith, who has just received his Distinguished Service Award and the Committee. To assist the committee a new computer system has been installed to manage membership and subscriptions as well as all the traditional draws, totes and raffles. Written and devised by former Secretary John Hall the system handles everything that's needed and frees the

committee for other duties.

"It's been fantastic," says Michael. "We used to need three Committee members to check the Tote double on a Sunday night, for instance, and if there wasn't a winner we had to check it all again. Now it's a press of a button. Similarly, subscriptions can now be printed and recorded faster than we could write them up."

The club had been founded nearby as the Quarry Street WMC and after a previous bankruptcy in 1912 emerged as the Mount Osborne Club after acquiring Osborne House, the home of businessman Hugo Wood.

The house was famous for its peacocks and the club were able to make two separate bowling greens within the grounds. Sadly these were lost when the current premises were built in 1966, though it has gained a sizeable car park.

Barnsley's Oakwell ground, is less than 10 minutes' walk away. Fans travelling by car are welcome to drop in as are coach parties by appointment.

This new club regained its deeds in time for its 50th anniversary in 1988 and to celebrate the Committee gave every man in the club a tie and every woman a bone china mug. More celebrations are planned early next year though the Committee never forget that their success is only achieved through hard work. Says Steve: "It's the members who have built this club up, we are only here to run it for them."

COMPUTER AIDED DESIGN

FULL INTERIOR REFURBISHMENT



Call: 01372 453915

BARS

CARPETS

FURNITURE



www.easeco.co.uk

40 Bookham Industrial Estate,  
Church Road, Bookham, Surrey KT23 3EU

contact@easeco.co.uk

# MEMBERS ENJOY LAW SCHOOL



Our Club Law weekend last month attracted more than 20 students to Saltburn House and they posed for a group picture outside the centre.

Among those who can be pictured on the front row with the students are Education Assistant Cath Fitzpatrick (centre) Union Vice-President John Tobin (left) and lecturer John Vanderwolfe (right). Among those pictured behind them are National Executive members Geoff Whewell and Geoff Blakely and Head Office Manager Stephen Goulding. This month Saltburn hosts a Club Finance weekend from Friday, November 16 to Sunday, November 18.

## Dogs help Saltburn

Our sponsored greyhound meeting in aid of Saltburn House was held at Owlerton Stadium in Sheffield on September 25.

The lucky winning dog of the CIU Final was Heat 2 Trap 5 and prize money of £1,680 was shared by Wessex Branch and Monk Bretton Club, Barnsley.

Sincere thanks are given to all clubs that supported Our Centre and our trade sponsors who were: BOC Sureflow, The Co-Operative Bank, Dransfield Novelty Co and Thompson & Bryan.

## Wild about Harry



Durham's National Executive member Colin Armstrong presented the prizes at the leek show at Tanfield Lea WMC. Pictured (left to right) are: Chairman Bill Pearson, Leek Club Secretary Mel Smith, show winner Harry Lake, Colin Armstrong, Dennis Ashe, Jim Kennedy and former Branch Secretary Brian Young. Left: Bill Pearson and Mel Smith demonstrate some clubland humour during the show's auction.



SALTBURN HOUSE

## 2012 PRICES AND THEMED BREAKS

To book please ring 01287 622 008

### PRICES

Non-member B&B = £36	Club member
Non-member	half board = £32
half board = £42	Convalescent stay = £29

Club parties over 15 people:  
£25 per person with one room free.  
Club parties over 35 people:  
£25 per person with two rooms free.

### TURKEY AND TINSEL

Friday 7th December -  
Monday 10th  
December. £170.

New Year  
Party

**£180.**

All prices include VAT



A recent online list of notable club buildings included only one CIU club, the Grade II-listed Houldsworth WMC in Stockport (above). Magnificent though it is we are sure others are listed by English Heritage. If your club is in a listed building please send a picture of it to [cj@powdene.com](mailto:cj@powdene.com).

# Club raises £3,000 to honour Little Ronnie

Whitburn & Marsden Club, near Sunderland, have raised more than £3,000 in honour of former Concert Secretary Ronnie Hendry, who died in the summer.

Ronnie, who was less than 5ft tall and was known to everybody as Little Ronnie, died aged 63 after a six-month battle with lung cancer.

The club organised a charity night on October 13, hoping to raise £2,000 for Macmillan Nurses, who gave Ronnie vital support in the final months of his life. Club Treasurer Joe Bretell, one of the organisers, said: "Ronnie was part of this club for more than 30 years, he was one of the characters of the village, everyone knew him as Little Ronnie.

"The hall was completely packed. Every

## OBITUARIES

shop in the village gave prizes. It was such a successful night we're thinking of making it an annual event." Joe also got his chest waxed while a couple of other members had their heads shaved.

Among the prizes was an Argentina football shirt signed by Lionel Messi and a signed Sunderland football provided by former Foreign Secretary David Miliband, who is Vice-Chairman of Sunderland Football Club. Mr Miliband, who is also the local MP, was guest of honour when the club celebrated its centenary last year. Ronnie received his 25-year Long Service Award on the same night. A former shipyard worker, he had also trained as a jockey for six months.



Ronnie is pictured with David Miliband after receiving his Long Service Award.



Whitburn & Marsden Club Secretary Billy Charlton (right) is pictured with then Durham Branch President Colin Armstrong (left) and Secretary Brian Young after receiving the club's centenary certificate last year.

### Mick Tinker

Alverthorpe WMC in Wakefield regret to announce the death of their long-serving President Mick Tinker.

Mick joined the Committee in 1959 and in 2009 was one of the first clubmen to receive one of

the Union's special certificates to mark 50 years' service (right). He became a Trustee in 1974 and was part of the team that took the decision to buy two neighbouring cottages enabling the club to extend their concert room and make it one of the finest in the North. He became Club President in 1994.

"Mick will be very greatly missed," said Club Secretary Malcolm Shaw. "He put so much work into this club.

"His forte was calling out the bingo numbers, it was something he loved. He must have done more bingo calling than anyone else in the area."

Mick played rugby league for Trinity Rovers and Wakefield Loco and was one of the fastest players around.

The club sends its condolences to his widow Barbara as well as his daughter and four sons.



Picture: Wakefield Express

### Bill Hawkins

Islip WMC in Northamptonshire regret to announce the sudden death of former Trustee and Committee member Bill Hawkins, who not only served the club for many years but was also Chairman of the local skittles league.

Bill, who was 69 and married to the late Sandra, was a stalwart member of the club having held a number of posts, firstly as a hard working committee man, then as a Trustee and again as a committee man.

As a vital member of the weekly Tote team, Bill also played his part in the recreation of the club and the village where as well as being Chairman of the Islip & District Skittles League, he was a regular skittles and quiz team member. He was a well known and popular clubman in the county and this was confirmed by the exceptional attendance at his funeral service in Kettering.

The committee and members of the club wish to extend to his daughter Lisa, and all the members of the family, deepest sympathy in their sad loss. Bill is already sadly missed.



### Keith Mercer

Tributes have been paid to respected York bowls player and organiser Keith Mercer, who has died suddenly. Keith, who was 73, had been Secretary of the York Railway Institute bowls team for 24 years and was also Assistant Secretary of the Branch bowls section.

Branch Bowls Secretary Malcolm Dewhirst said: "Keith will be greatly missed by his bowling colleagues and friends. He was a well-known and respected bowler, playing outdoor with the Railway Institute and indoor at New Earswick Bowls Club.

"He was noted for being a meticulous person in carrying out his secretarial duties. Paying attention to detail was a quality he had learned in his long career with British Rail when working in the diagramming section preparing train timetables."

Keith was the last but one person to be called up for National Service when he joined the RAF. He later served in the Territorial Army for 13 years where he reached the rank of staff sergeant. The Branch sends its condolences to his widow Valerie, daughter Susan, son Andrew, and his grandchildren and great-grandchildren.

# CLUB OUTINGS . . . CLUB OUTINGS

## BLACKPOOL & LANCASHIRE

### BLACKPOOL No. 1 WORKING MEN'S CLUB & INSTITUTE

9-17 Bloomfield Road, Blackpool FY1 6DH. Tel: (01253) 343 508  
 Extends a warm welcome to all CIU associates and bona-fide guests.  
 ★ FREE ENTERTAINMENT ★  
 7 nights throughout the summer season (weekends winter).  
 Change of artists nightly.  
 Coach parties welcome.

**CONTACT THE SECRETARY IN WRITING**

### BLACKPOOL ROYAL BRITISH LEGION CLUB

33-38 King Street, Blackpool FY1 3EJ.  
 Enjoy your visit with us at the club.  
 Good all-round entertainment.  
 Bookings for coach parties accepted.  
 Room available for hire.  
 Sec: Mr K Teasdale or Treasurer Mrs R Thomas  
 Club: (01253) 626 308; Office: (01253) 290 322  
[www.blackpoolrbl.co.uk](http://www.blackpoolrbl.co.uk)  
 email: [blackpoolbritishlegion@gmail.com](mailto:blackpoolbritishlegion@gmail.com)

### BLACKPOOL LMS SPORTS & SOCIAL CLUB

Back Ribble Road, Blackpool FY1 4AB  
 Tel: (01253) 625040  
 A warm welcome to all CIU members and bona fide guests. Free entertainment, bingo, super-5, raffle and Find the Joker.  
 Coach parties welcome. Room available to hire.  
 Children over the age of 3 are allowed in the club.

## You've been to the rest - now visit the best!

*Voted the best club in the North West on TV's "The One Show".*

### BLOOMFIELD CLUB & INSTITUTE

128 Bloomfield Road, Blackpool FY1 6JW  
 Free entertainment seven nights a week along with your favourite games  
 • Bingo • Tote • Supa5.  
 The club is on one level with disabled toilet facilities. Coach parties and football fans welcome.

**Contact Secretary on (01253) 344583**

### Brunswick WMC Bethesda Road, Blackpool.

Telephone: (01253) 627 508  
 Coach parties welcome, also parking available.  
 Entertainment 7 nights, comedians at weekends throughout the summer season. 2 large TV screens, cold food available. All branded doubles on offer. Smoking area at rear in beer garden.  
 Wheelchair friendly. No beer increases for visitors.  
 Contact Billy Hill, Club Secretary.

### GOING TO THE RACES? Why not try BURNLEY MINERS WMSC As seen on TV

2 minutes from the Town Centre and Turf Moor.  
 Entertainment Friday, Saturday and Sunday.  
 Coach parties by appointment.  
 Breakfast and/or evening meal.  
 Tel: Bar (01282) 422 791 or Office (01282) 835 429

**To advertise contact Chris Brewis on (0191) 265 0040 or email: [cj@powdene.com](mailto:cj@powdene.com)**

### KNOTT END WORKING MEN'S CLUB

Offers a great welcome to CIU members and parties. Why not try  
 • a visit to the seaside • a ferry ride to Fleetwood  
 • a bowling green competition  
 or just our good food and entertainment.  
 SALISBURY AVENUE, KNOTT END-ON-SEA, LANCs.  
 Office telephone (01253) 810362  
 Tel: Secretary Mrs Karen Bradford for dates and details  
**(01253) 812 226**

### ROSEGROVE UNITY Working Men's Club

Holme Lodge, Rossendale Road, Burnley, Lancs, BB11 5DL.  
 Situated 2 minutes from Junction 9 on M65.  
 Large car parking space available.  
 Entertainment Friday, Saturday and Sunday.  
 Bookings must give 14 days' notice.  
 contact Secretary on 01282 431 363 or e-mail [rosegrove20@gmail.com](mailto:rosegrove20@gmail.com)

## BRIGHTON & SUSSEX

### Eastbourne & District Trade Union Club & Institute Ltd.

Clapham House, 48 Seaside, Eastbourne, East Sussex BN22 7OL.  
 A warm welcome is guaranteed to all CIU associates and guests. A good selection of reasonably priced beers and spirits available. Temporary membership can be arranged at the door for all holiday makers. Large groups or coach parties are welcome with prior arrangements. Situated 5 minutes walk from the beach. Please contact secretary on (01323) 727703.

### EASTBOURNE WORKING MEN'S CLUB

102/104 Firle Road, Eastbourne BN22 8ET.  
 Tel: (01323) 723322  
 Email: [eastbournemwc@googlemail.com](mailto:eastbournemwc@googlemail.com)  
 Visit the one and only workers' club in our lovely South Coast town. We have live music, raffles, bingo, darts, snooker and pool. See our Facebook page for coming events. A warm welcome to CIU members all year round.

### Littlehampton Trades & Labour Club

Wick Street, Wick, Littlehampton BN17 7JH. Telephone (01903) 714 054  
 A warm welcome awaits all visitors. Facilities include darts, crib and Sky TV. Catering for private parties can be arranged (14 days' notice please). Live entertainment every Saturday.  
 Coach parties welcome with prior notice, please contact the Secretary.

## ESSEX & EAST ANGLIA

### HUNSTANTON (NORFOLK) UNITED SERVICES SOCIAL CLUB

A warm welcome to all visitors. Large enclosed garden and car park with sea views. Three snooker tables, also pool table and darts. Bingo Mondays and Thursdays and one game Saturday evening. Live weekend entertainment. Catering arranged on request. Disabled friendly. Close to Sandringham Royal Estate, Coaches welcome midweek.  
 Contact Club Steward on (01485) 533360.

### Naval & Military Club (Southend-on-Sea) 20 Royal Terrace, Southend SS1 1DU.

Tel: (01702) 347169  
 A warm and friendly welcome awaits you. Large rear garden and roof terrace with fantastic views overlooking the seafront and estuary. Live entertainment Saturday nights and Wednesday afternoons. Hot and Cold Food available every day of the week. Local Real Ale Club of the Year. Coach parties welcome but must contact the Steward, Kevin Arkin prior to the visit.

### Walton-on-Naze RBL Club

Vicarage Lane (off High Street). (01255) 674 153  
 Visiting the seaside? A warm welcome and friendly atmosphere - two minutes from beach front.  
 Live entertainment at weekends - sing-a-long Thursday afternoons - large screen TVs - pool - darts. Good range of drinks and bar snacks available. New membership available - CIU and RBL affiliated.  
 Coach parties welcome! Contact Secretary

## HAMPSHIRE & ISLE OF WIGHT

### Lindford & District Working Men's Club

Liphook Road, Lindford, Bordon, Hampshire GU35 0PN. Telephone: (01420) 472 228  
 A warm welcome is extended to all Associate Members. Only stipulation is children under five years old must leave the club by 9pm. Just off the A325 road between Farnham and Petersfield. So why not call in on your way to and from the south coast. Please give the Secretary 14 days' notice of party visits.

### Newport (I.W.) Social Club

13-14 Lower St James Street, Newport, Isle of Wight PO30 5HB. Tel: (01983) 527 291  
 Situated in the centre of town, with a warm friendly atmosphere where you can bring family and friends. Open all day, function room, snooker room, darts, pool and jukebox. Kitchen now open 7 days a week for hot and cold food. Coach parties always welcome by prior arrangement.

### COWES COMBINED SERVICES & SOCIAL CLUB

85 High Street, Cowes, Isle of Wight PO31 7AJ.  
 A warm and friendly welcome is extended to all visitors. Situated on the sea front with panoramic sea views from the stage dining area, the club has one of the best views in the country. Ideal for parties and outings. Freshly prepared meals available 7 days a week. Disabled facilities. Coach parties very welcome, please notify Secretary or bar manager in advance. Entertainment Friday and Saturday evenings.  
 Tel: (01983) 292921 email: [rblcowes@onwight.net](mailto:rblcowes@onwight.net)

## HEREFORD & WORCESTERSHIRE

### Hereford Welsh Social Club

1 Hinton Road, Hereford, HR2 6BL.  
 Tel: (01432) 269038/285974.

Email: [herefordwelshclub@hotmail.co.uk](mailto:herefordwelshclub@hotmail.co.uk)

A friendly welcome is extended to all Associate Members. Live Entertainment every Saturday evening.

Hot and cold food available. Coaches welcome (please contact Secretary prior to your visit).

Please visit our website:  
[www.herefordwelshsocialclub.co.uk](http://www.herefordwelshsocialclub.co.uk)  
 "Hereford's most popular social club"

### (HEREFORD) RICHMOND PLACE CLUB

69/71 EDGAR STREET, HEREFORD HR4 9JP  
 A warm and friendly welcome to all associates, whether you are visiting for the races, football or just passing through. Live entertainment every Saturday.  
 Sunday-Country & Western/Swing and Jive. Restaurant with hot and cold food available/Sunday lunches (Book in advance) Disabled facilities, Real Ales.  
 Coach parties very welcome.  
 Contact Secretary, Les Walker on (01432) 356 529.

## KENT

### BEXLEYHEATH WMC

Royal Oak Road, Bexleyheath. DA6 7HG  
 Telephone (0208) 303 2163  
 Friendly atmosphere, comfortable surroundings and an excellent range of beers to quench your thirst. Everything you require on your visit to Bluewater and Lakeside shopping centres.  
 Refreshments available.  
 (Please give advance notice).

### SOUTHBOROUGH MEN'S CLUB

Forge Road, Southborough, Tunbridge Wells TN4 0EX.  
 Tel: (01892) 529 304; Office: (01892) 523 832  
 A warm and friendly welcome is extended to all Associate members and guests. Ideal for parties and outings from the coast, we have frequent live entertainment on Saturdays, bingo on Wednesdays and Sundays. Sky TV, snooker and pool. Club open all day Friday, Saturday and Sunday. Coach parties and catering by arrangement.

### SUNDRIDGE PARK WMC

134 BURNT ASH LANE, BROMLEY.  
 Tel: (020) 8464 3638 (Office); (020) 8460 6348 (Club)  
 Located close to A21 and A20. A warm welcome is extended to all visitors. Two bars serving a wide range of drinks. TV in bar and the lounge. Purpose-built snooker room with four tables. Live entertainment Saturday and Sunday evenings. Coach parties by prior arrangement with the office.

### Wainscott Institute (WMC)

4 Wainscott Road, Wainscott, Rochester, Kent ME2 4LB.  
 Tel: (01634) 717 464  
 A warm welcome is extended to all CIU associates. Live music & bingo on a Saturday night. A range of facilities including snooker, pool & darts. We welcome coach parties by prior arrangement with the steward. Buffet refreshments can be arranged. We are close to all the motorways via the Medway towns.  
 CHILDREN ARE WELCOME.

## LEEDS & WEST YORKSHIRE

### Visiting Blackpool or Yorkshire Coast? Haydock Park or York Races?

Then call at: Elland Working Men's Club Roseberry Street, Elland, West Yorkshire HX5 0HT  
 For your breakfast on the outward journey. And for an evening's splendid entertainment on your way home. We are only 2 miles from Junction 24, M62 on the A629. A warm welcome extended to all Associate Members. Live entertainment on Saturday and Sunday evenings. Dancing on Thursdays to our resident organist. Fully modernised Concert Room and Lounge. Excellent Games Room. Floodlit Bowling Green. Large Car Park. Coach Parties welcome - please let us have 14 days' notice in writing to the Secretary Steve Graydon. Tel: Club (01422) 373 023. [www.ellandwmc.web.com](http://www.ellandwmc.web.com)  
 Telephone pre-bookings to be confirmed in writing to the Secretary.

### Belle Isle WMC

Belle Isle Road, Leeds LS10 3PE.  
 Warm and friendly club with large car park, good value beer and large concert room. Live bands Friday, Saturday and Sunday. Coaches welcome.  
 Contact Secretary on (0113) 2718 768.

### SWARCLIFFE WORKING MEN'S CLUB

Swarcliffe Avenue, Leeds LS14 5DE  
 A warm and friendly welcome always assured in the comfortable surroundings of our recently refurbished club. Live entertainment every Friday, Saturday and Sunday evening. Relax in the quiet of the lounge or try a game of snooker on one of our three superb tables.  
 Big screen Sky Sports TV.  
 Planning a day at the races?  
 York, Wetherby, Ripon.  
 We are 2 minutes from the A64 and 5 minutes from the M1. Breakfast and evening meals for large parties available by appointment.  
 Contact: Glen Doyle (Secretary)  
**(0113) 2959100**

## LEICESTER & EAST MIDLANDS

### Nottingham Oddfellows Club

89 Humberstone GATE, Leicester.  
 TELEPHONE: (0116) 262 0181  
 262 5404 (Evenings) - CIU Affiliated

★ City Centre Club  
 ★ Coach park right outside premises  
 ★ 2 minutes from centre of Leicester  
 Coach parties and parties always welcome. Food supplied hot or cold - 7 days' notice or please phone prior to visit. Children welcome. Dances Monday, Tuesday and Friday.  
 Entertainment available.  
 Phone or write to Secretary Eric Johnson

# CLUB OUTINGS . . . CLUB OUTINGS

## NEW PARKS SOCIAL CLUB & INSTITUTE LIMITED

Battersbee Road, Leicester LE3 9LD  
All coach parties welcome, with 14 days' notice to the secretary. Fully air conditioned large concert room. Hot and Cold Food available. Sky TV shown on big screen in the games room. Children allowed Friday and Saturday nights. If you have any questions please contact the secretary on Telephone (0116) 2333 305 or Fax (0116) 2333 303.

## SAFFRON LANE ESTATE WMC

429 SAFFRON LANE, LEICESTER, LE2 6UF  
Welcomes all CIU members to our friendly club here in Leicester. Only 5 minutes from the M1 junction 21 and close to the racecourse and the football, rugby and cricket stadiums.  
Clean, comfortable and fully air-conditioned. Please visit our website where you will find details of all our facilities and activities.  
[www.saffronlanewmc.co.uk](http://www.saffronlanewmc.co.uk)

## SKEGNESS EX-SERVICE CLUB

2 Grand Parade, Skegness, PE25 2UN.  
Telephone: (01754) 762113  
Located on the seafrost near the clocktower, 2-3 mins from town centre. Lounge bar, pool/children's room, 1st floor patio area. Reasonably priced beers/lagers and house doubles. Selection of chilled baps. Live entertainment every Saturday (Sundays main season). Open 11.30-11.30 most days. Pre-booked coaches welcome - come to a completely refurbished 21st century club.

## LONDON

### CRICKLEWOOD TRADES HALL CLUB

134 CRICKLEWOOD LANE LONDON NW2 2DP  
TEL:(020) 8452 8614  
A WARM WELCOME TO ALL AFFILIATED MEMBERS. COACH PARTIES WELCOME BY PRIOR ARRANGEMENT. 5 MINUTES FROM WEMBLEY STADIUM AND 2 MINUTES FROM BRENT CROSS SHOPPING CENTRE. LIVE BANDS AND BINGO ON SATURDAY AND SUNDAY NIGHTS. CONCERT HALL AVAILABLE FOR HIRE.

### DONE OUR BIT EX-SERVICEMEN'S CLUB

128A MAYGROVE ROAD, LONDON NW6.  
OFFICE: (020) 7624 3701; CLUB: (020) 7624 3603  
Coach Parties welcome by appointment with the Secretary. Entertainment Friday, Saturday and Sunday. Food by arrangement. 15 minutes from Wembley Stadium. 10 minutes from West End. No children under 16 on Saturday.

### THE HAMMERSMITH CLUB

Rutland Grove, London W6 9DH  
10 mins' walk from Fulham FC and less than 25 mins by local transport to Chelsea and QPR. A warm and friendly welcome to away fans looking for good hospitality and a relaxing drink. Also 20 mins to Westfield, Europe's largest shopping centre and 30 mins to West End theatres. Contact us on (020) 8748 5760 or visit [www.hammersmithclub.net](http://www.hammersmithclub.net)

### HARROW ROYAL BRITISH LEGION

Northolt Road, South Harrow HA2 0DW.  
Extends a warm welcome to all Associate members and guests. Situated 10 minutes from the A40 and 20 minutes from Wembley Stadium. We have live bands every Saturday and Sunday night. Catering on request. Coach parties welcome with prior notification to Kath or Roy Roberts. Telephone: (020) 8422 1222.

## Hayes WMC

Pump Lane, Hayes, Middlesex UB3 3NB.  
Telephone: (020) 8573 1721  
e-mail: [bobdaybell@aol.com](mailto:bobdaybell@aol.com)  
Why not visit the flagship of clubs in the South? Ascot, Kempton Park & Sandown racecourses all nearby. Live bands every Friday and Saturday night. Late night cabaret last Saturday of every month, at least 3 acts, charge for entry, late bar. Catering available weekends, orders taken in advance to your requirements. Visit our website: [www.hayesworkingmensclub.com](http://www.hayesworkingmensclub.com) for our full entertainment programme. Coaches welcome by prior arrangement with the secretary.

## ISLEWORTH CLUB

Goodenough House, 109 St John's Road, Isleworth, Middlesex TW7 6PN. Telephone: (020) 8560 2569  
We are good enough - are you?  
5 minutes from Twickenham Rugby and only 15 minutes from Kempton and Sandown. Call in on your way and give us a try. Pick your winners from our varied selection of popular beers which are available in either our large Concert Room or Lounge. Close to the M4 and M3. Please give prior notice for parties. Coach parties are welcome.

## WATFORD EX-SERVICES CLUB

12/14 St Albans Road, Watford, Herts WD17 1BN  
Near junction 5 or 6 M1. Short walk from Metropolitan Line or Watford Junction, 25-30 mins from Wembley. Music every Saturday night and food served from 12pm to 8pm 7 days a week. Live football on big screen, pool table, dartboards, quiz night every Friday.  
Coach parties welcome by prior arrangement.  
Contact Alf Jobson Secretary  
[www.watfordexservices.co.uk](http://www.watfordexservices.co.uk) - (01923) 236687

## Wealdstone Social Club

Railway Approach, Harrow, HA3 5BX.  
Tel: (020) 8427 3334  
[www.wealdstonesocialclub.t83.net](http://www.wealdstonesocialclub.t83.net)  
email: [secretarywsc@btconnect.com](mailto:secretarywsc@btconnect.com)  
For 15 min connection to WEMBLEY STADIUM. Coach parties welcome.  
Free parking evenings/weekends.  
Please arrange with Secretary for bookings.  
Function Hall available for private parties.

## NORTHAMPTONSHIRE & CAMBRIDGESHIRE

### St James Working Mens Club

Weedon Road, St James, Northampton.  
A warm welcome awaits all club members. Lounge, Games Room and large Concert Room. Parties welcome, catering if required by prior arrangement. 5 minutes M1, Junction 15A.  
Please contact Secretary Mrs P. Webster.  
Tel: (01604) 456 602 [www.stjameswmc.co.uk](http://www.stjameswmc.co.uk)

## SHEFFIELD & SOUTH YORKSHIRE

### ARMTHORPE CORONATION CLUB

Tranmoor Lane, Armthorpe, Doncaster DN3 3BS.  
Handy for racecourse and Doncaster Rovers. Close to M18. Big screen TV, entertainment every weekend.  
Ring Club Secretary Alan Jones on (01302) 831 393

### Arundel Ex-Servicemen's Club

City Road, Sheffield  
A friendly Club close to Town Centre Facilities include a 500 seat Concert Room, two other lounges and a Games Room. Great Cabaret every night except Tuesday and Wednesday. Coach parties please contact Mr B. Simmonite. Children allowed up to 10 years Catering for Buffet if required.  
Telephone: (0114) 239 7151

### CARCROFT VILLAGE WMC

Chestnut Avenue Carcroft, Doncaster DN6 8AG  
Extends a warm welcome to all CIU affiliated members. Coach Parties welcomed by prior arrangement. 1 mile from A1 and close to M1, M18 and M62. Top class entertainment every weekend. Handy for Doncaster Races and trips returning from North or South coastal routes. Big Screen Sky TV and premier football. All enquiries to John Oldroyd, Secretary on (01302) 725 497.  
[www.carcroftvillagewmc.org.uk](http://www.carcroftvillagewmc.org.uk)

### Hawthorn Recreational & Social Club

Goodison Boulevard, Cantley, Doncaster. Tel: (01302) 536 565  
Easily accessible for the Racecourse.  
Big screen Sky TV.  
Artistes on Saturdays.

### INTAKE SOCIAL CLUB

Craithie Road, Doncaster DN2 5EG.  
We are the closest club (5 minutes' walk) to Doncaster Racecourse. (See Page 19 for offers). Bar snacks available. Tremendous value-for-money bar prices.  
Contact Secretary Tom Forester in advance on: (01302) 320 036 or email [intakesocialclub@yahoo.co.uk](mailto:intakesocialclub@yahoo.co.uk)

## SURREY

### EGHAM UNITED SERVICES CLUB

111 Spring Rise, Egham, Surrey TW20 9PE.  
"North Surrey CAMRA Club of the Year 2008 & 2009"  
"Finalist for CAMRA Club of the Year 2009"  
Located 5 minutes from J13 M25, handy for Windsor Castle and races, Kempton, Ascot, Epsom and Sandown. 5 mins from Egham Station on the Waterloo to Reading line. Three real ale and cider festivals a year. [www.eusc.co.uk](http://www.eusc.co.uk)  
Tel: (01784) 435120 or (07738) 714572  
(Real Ale Festivals and Party Bars also arranged)

### DAY OUT RACING ESHER W.M.C.

142 Esher High Street, Esher, Surrey.  
Telephone: (01372) 467 758  
Sandown Race Course within walking distance. Kempton Park and Epsom also nearby.  
A warm welcome is extended to all associate members.

### Walton Working Men's Club

21A Church Street, Walton-on-Thames, Surrey KT12 2QP.  
Extends a warm welcome to Associate Members. Near M25/M3, Sandown and Kempton Racecourses, Hampton Court, Wentworth, Twickenham Rugby and Thorpe Park.  
Ideal fishing - River Thames. Dancing to live music Saturdays/Sundays. Coaches. In writing to the Secretary.  
Telephone: (01932) 220 361.

## THAMES VALLEY

### THE ASHTON CLUB

24A SHEEP STREET, BICESTER, OXON  
A friendly welcome is extended to all. Snooker, pool, darts, dms, bingo, Sky TV, functions etc. Coach parties welcome, 40 mins from Newbury, Towcester racecourses, 5 mins from Bicester village shopping centre, and 5 mins from J9 M40. Open all day. For more information please call the manager on (01869) 252160

### Banbury Trades & Labour Club

32 West Bar Street, Banbury, Oxon OX16 9RR.  
Tel: (01295) 215 7119 (H); (01295) 254 168 (Club).  
A warm welcome is extended to all Associates. Coach parties welcome with 14 days prior notice to Secretary Joan Conley. Live entertainment on Saturday night. Food available. Please contact Secretary with your booking.

## WALES

### Bettws Social Club

Lambourne Way, Bettws, Newport, Gwent.  
A warm friendly welcome assured to all CIU affiliated members and guests.  
Less than 10 minutes from junction 26 of the M4. Coach parties welcome by prior appointment. Live entertainment every Saturday evening. Catering can be provided by arrangement. Tel: (01633) 858 780.

### CARDIFF WEST END SOCIAL CLUB

COWBRIDGE ROAD WEST, ELY, CARDIFF CF5 5BY.  
A very friendly welcome to CIU Associates and their families from CARDIFF'S PREMIER SOCIAL CLUB.  
10 minutes from M4.  
15 minutes to city centre.  
Millennium Stadium,  
Cardiff International Arena, St. David's Hall/ Centre, Cardiff Bay.  
Live entertainment every Saturday Night with Bingo/Raffle/Tote/Disco  
FULL SKY SPORTS/RACING UK  
Hot and cold food available.  
COACH PARTIES MOST WELCOME.  
Telephone: (029) 20594004

### Going to Premiership Swansea City or racing at Ffos Las? Visit

**MORRISTON WMC**  
11 Slate Street, Swansea SA6 8AA.  
A friendly club which makes visitors welcome.  
Liberty Stadium 15 minutes, Ffos Las 45 minutes, Ospreys 15 minutes. 10 minutes from M4 Junction 45.  
Coach parties welcome with advance notice.  
Ring (01792) 771580

## Rogerstone and Bassaleg Social Club

1 Tregwylm Road, Rogerstone, Newport NP10 9DW.  
A warm friendly welcome assured to all CIU affiliates and guests, less than 10 minutes from junction 27 of the M4. Coach parties welcome by prior appointment, live entertainment every Saturday evening.  
Telephone: (01633) 893 508.

## WARWICKSHIRE & COVENTRY

### BEDWORTH EX-SERVICEMEN'S SOCIAL CLUB & INSTITUTE

Rye Piece, Bedworth, Nr. Nuneaton, Warwickshire. Tel: (024) 7631 3236  
Extends a warm welcome to all associates. Restaurant facilities Monday to Saturday - Bar snacks also available. 6 minutes from junction 3 of M6. Approx. 5 miles to Coventry City. Saturday/Sunday night entertainment, live music, bingo, bar and lounge. Contact Secretary for bookings.

## Willenhall Social Club

Robin Hood Road, Coventry CV3 3BB. Secretary: (024) 7630 1222 or 7630 3278.  
Welcome to all Associate Members. Entertainment every Saturday and Sunday night in concert room (seats 600). Bar, games room and luxury lounge facilities. Large car park. Hot and cold snacks available. 10 minutes from City Centre.  
No Children Allowed.  
Coach parties apply to Secretary.

### HEN LANE SOCIAL CLUB

Beacon Road, Holbrooks, Coventry CV6 4DS.  
5 minutes from M6 Junction 3, 10 minutes' walk from Ricoh Arena, minibus from club on match days. Excellent function room and facilities. Hot and cold snacks available at all times. Prior notice required for coach parties and catering (menu sent on request).  
Please contact the Secretary.  
Tel: (024) 7672 4830; Office: (024) 7672 4832.

### UNICORN SOCIAL CLUB

Holbrook Lane, Coventry CV6 4DE. (5 mins from M6 J3). Just 15 minutes' walk from the Ricoh Arena, home of Coventry City Football Club. Excellent function room and facilities including games room and bar with large screen satellite TV. Modern air-conditioned facility with live music every Saturday evening and hot and cold food available. Prior notice required for coach parties, including official supporters' clubs.  
Please contact the Secretary at: [unicorncoventry@yahoo.com](mailto:unicorncoventry@yahoo.com) or by telephone on (024)76 684741

## WEST COUNTRY

### The Cabbage Patch Club

LAWRENCE WESTON SOCIAL CLUB  
Lawrence Weston Road, Bristol BS11 0ST.  
Extends a warm West Country welcome to those travelling to holiday destinations. 3 mins from Junction 18 M5. 10 minutes M4.  
Coach parties by arrangement.  
Ring (0117) 982 9148

### Poole Labour Club

22 Wimborne Road, Poole, Dorset  
Tel: (01202) 674 059 / 686 256  
Offers the 3 S's to all affiliated members. Sea, Sand and Speedway! Centre of Poole. 20 minutes from Bournemouth, 2 minutes from Poole Stadium for Speedway and Greyhound Racing. Good beer, warm welcome, open all day. Entertainment on Saturday nights, Tuesday Tea Dances. Darts, Skittles, Snooker, Pool and Dominoes games can be arranged. Certain restrictions apply to children.  
Contact Secretary for details.

To advertise contact  
**Chris Brewis**  
on (0191) 265 0040  
or email: [cj@powdene.com](mailto:cj@powdene.com)

# CLUB OUTINGS . . . CLUB OUTINGS

## WESTON-SUPER-MARE WMC

Orchard Street, Weston-super-Mare.  
Telephone: (01934) 418 202

A warm welcome is extended to Associates and their families in Weston's premier club. Situated in the town centre and close to the sea front.

Live entertainment every Saturday and Sunday evening, Sunday, Tuesday and Wednesday afternoon Bingo (Friday, Saturday and Sunday). Buffets arranged.

Large downstairs concert room seating 250. Coach parties welcome including a Saturday.

Please contact the Secretary giving prior notice of visit. Open all day.

## WEYMOUTH WMC

MITCHELL STREET, WEYMOUTH,  
(Harbour End Of Town)

Less than 5 minutes from the beach! We welcome all CIU affiliated members. Music Friday & Saturday evenings, with Bingo fliers on these nights. Plus the usual club activities.

Restaurant now open.  
Tel: (01305) 786 392 or (01305) 787254  
www.weymouthworkies.co.uk

Passing through the Cotswolds?  
Then why not visit

## Wotton Hall Club Ltd.

138 Barnwood Road, Gloucester  
- We welcome all Associate Members -  
Bar, Lounge, Ballroom and Games Room. Dancing every Saturday. Restaurant facilities and basket meals available. 14 days' notice required.  
Telephone: Secretary (01452) 610 025  
9.00 am - 1.00 pm Monday - Friday

## WEST MIDLANDS & BIRMINGHAM

### Alvechurch SPORTS & SOCIAL Club

The Square, Alvechurch,  
Near Birmingham B48 7LD.  
A friendly welcome to all Associate Members.  
Weekend entertainment and comfortable surroundings, also food available. Close to M42 and M5 in a picturesque part of the countryside.  
Contact: A. Morrison, Secretary on (0121) 445 2121.  
Large parties please notify 14 days in advance.

### REMEMBRANCE CLUB LTD.

10 CHESTER ROAD, CASTLE BROMWICH,  
BIRMINGHAM B36 9DD  
Extends a warm welcome to all Associate Members.  
Live entertainment every Saturday and Sunday evening. Line Dancing Mondays. Ballroom Dancing Tuesdays. Large comfortable lounge. Games Room.  
Ample parking. Close to M6/M42  
(nr. Spaghetti Junction). Coaches by arrangement.  
Contact the Secretary. (0121) 747 5256 / 747 2943

### Yardley Wood Social Club

118 School Road, Yardley Wood,  
Birmingham B14 4JR.  
Club Tel: (0121) 474 2026 Sec: (0121) 474 3725  
Visit our brand new website:  
http://www.yardleywoodsclub.com/  
Two large TV screens, 6 snooker tables, bingo and weekly entertainment, bowling green. Function rooms available for hire and catering. Large car park at rear of the club.  
Associate members welcome.

## YORKS (N & E) & NORTH EAST

### BLAKELAW & DISTRICT SOCIAL CLUB

6 Cragston Way, Newcastle NE5 3SW.  
Friendly club on northern edge of Newcastle. Handy for A1, Racecourse and St James' Park. Coach parties welcome.  
Food can also be arranged.  
Contact Secretary Alan Campbell on  
(07986) 706354 or blakelaws@googlemail.com

To advertise contact  
**Chris Brewis**  
on (0191) 265 0040  
or email: [cj@powdene.com](mailto:cj@powdene.com)

## BEECHWOOD, EASTER SIDE & DISTRICT SOCIAL CLUB

Broadwell Road, Easterside,  
Middlesbrough TS4 3PP.  
(Opposite The James Cook University Hospital)

Live music every night with bingo, totes and raffles. Large bar with 4 snooker and 2 pool tables, 2 dart boards and all Sky sports channels. Two smoking areas with heated Beach Huts. Coach parties welcome with prior notice to The Secretary. Tel: (01642) 318789. Check the website it's all on there,  
[www.beadsclub.co.uk](http://www.beadsclub.co.uk)

## CENTRAL WMC

7 Beaumont Street, Darlington  
Tel: (01325) 464054

Situated near town centre, five minutes from A1(M). Associate members and coach parties are welcome as are football and racing followers.  
Please give prior notice.

Live entertainment and catering by private arrangement. Room available for birthdays, engagement parties, wakes and weddings.

## King Street Social Club

Phoenix House, 27 King Street,  
North Shields NE30 1BZ.

Telephone: (0191) 2900473.

Situated on the main road from North Shields to the coast. Main bingo sessions are Tuesday and Friday evenings and Sunday morning.  
Top class live entertainment every weekend supported by resident band "Soul Machine".

Coach parties welcome with prior notification to the Secretary David Farrell. Telephone (0191) 2900474.

## Middlesbrough RAOB Club (The Buffs)

51 Wilton Street, Southfield Road, Town Centre  
A19-A66 2 minutes. Redcar races, 10 minutes.  
Middlesbrough FC 5 minutes. Games Room, TV Lounge and Lounge. Live entertainment Saturday and Sunday.  
Disco Wednesday and Friday. 50/50 Dancing Tuesday and Thursday. A warm welcome to all affiliated members including coach parties with prior notice to the Secretary. Telephone: (01642) 860 511.

## New York Club & Institute Limited

22-26 Blossom Street, York YO24 1AJ.  
Tel: (01904) 612 244 [newyorkclub@btconnect.com](mailto:newyorkclub@btconnect.com)  
Secretary: Frank A. Healy BA HND CMD  
300 yards from station on way to racecourse. Warm and friendly welcome to all Associate Members and guests. A great place to call into before or after your visit to York. Beer garden and 42" screen with Sky TV.  
Parties and buffet-style catering by prior arrangement.

## Northallerton & District WMC

Elder Road, Northallerton, DL6 1NH.  
Tel: (01609) 772390  
Email: [Northallertonwmc@hotmail.co.uk](mailto:Northallertonwmc@hotmail.co.uk)  
Situated in the picturesque county town of North Yorkshire, with easy access to A19 and the A1, we extend a warm welcome to CIU associates. Only 15 mins from Catterick, Ripon and Thirsk racecourses. Racing and football channels showing on four TVs.  
Live entertainment and bingo Saturdays and Sundays.

## North Biddick Social Club

Bonemill Lane, Fatfield, Washington NE38 8AN.  
Excellent riverside location. Five minutes from A1(M) with excellent car/coach parking facilities. Games room with 2 snooker tables and 2 pool tables. Restaurant facilities and buffets catered for. Why not call on your way to see football games or cricket games in the area? Coaches welcome by prior arrangement with Secretary Michael Normile on

**(0191) 416 0148**

Why not visit our website at  
[www.northbiddickclub.co.uk](http://www.northbiddickclub.co.uk)

## OSBORNE WMC

Osborne Road, Chester-le-Street,  
County Durham DH3 3DS.

200 yards from the station and short walk to the Riverside Cricket Ground. Evening car and coach parking facilities. Live entertainment every Saturday night. A great place to call in after your day at the races. Bingo Mondays and Fridays.  
Just give us a ring on (0191) 388 8679.

## POPPLETON ROAD WMC

132 Poppleton Road, York YO26 4UP  
(01904) 793398

A warm friendly welcome assured to all CIU affiliates and guests. Wide selection of beers available, ideal for the races and close to the city centre. Bingo and raffle Fridays. Live entertainment and bingo, Saturdays and Sundays.

## SPITTAL RESIDENTS ASSOCIATION

Jubilee Centre, Highcliffe, Spittal,  
Berwick-upon-Tweed TD15 2JL.

A warm welcome to all. Five minutes from the A1, 30 minutes from Kelso Races, cabaret every Saturday evening. A spectacular evening once every month.  
Bingo Friday, Sunday and Monday nights.  
Coach parties welcome.  
Ring Treasurer Carol Lynn in advance on (01289) 305 597.

## City of York Tramways Employees'

- Club and Institute -  
1 Mill Street (off Piccadilly), York YO1 1PY.

5 minutes from town centre  
Entertainments Fridays, Saturdays and Sundays. Prize games. Concert room (seating 275), Games Room, Bar and live Sky Sports TV. Visiting Associates are welcome. Parties by arrangement.  
Telephone: (01904) 623 953.

## CLUB NOTICES

### Expulsions

Not now members of the following clubs. These should not be admitted as Union associates.

Mr Phil Martin (93415), Sundridge Park WMC, Kent  
Mr M.C. Graham (2227), Brigham & Cowans Employees Welfare Club, South Shields  
Mr John Barnett (B7), Northampton WMC

### Club Closed

East Ardsley General WM Club & Institute (Wakefield Branch)  
Barry Services Social Club (South Wales Branch)

### Club Withdrawn

Newbold Verdon WM Club & Institute (Leicestershire Branch)

### Club Applying for Membership of the Union

Territorial Club  
Rectory Lane  
Guisborough  
Cleveland TS14 6QQ  
(Cleveland Branch)

### Suspensions Expiring on Dates Mentioned

Mr David Proctor (1972B) Ipswich Labour Club (20th Dec 2012)  
Mr Robert W Mortimer (2009A) Ipswich Labour Club (20th Dec 2012)  
Mr Clive Lynch (1304A) Ipswich Labour Club (21st Mar 2013)  
Mr B Laywood, Little Harrowden WMC, Northants (26th Sept 2013)  
Mr C Biddlecombe, Lyndhurst WMC, Hampshire (6th July 2013)  
Mrs Carol Richards, Blackheath Newbridge WMC, SE London (9th April 2013)

## FOR SERVICE

### Certificate of Merit

Glynn Harper, Easington Colliery Club & Inst, Durham  
George Main, Holmeside Hall Labour SC, Durham  
Brian Watson, Holmeside Hall Labour SC, Durham  
Ronald Swaddle, Holmeside Hall Labour SC, Durham  
Rob Hodgson, Stanley Empire WM Club, Durham  
Fredrick Lawrence Wood, Darlington East End Club, Durham  
Alan Dobson, Darlington East End Club, Durham  
Brian Walsh, Harehills WM Club, Leeds  
Michael Carlin, Harehills WM Club, Leeds  
David Hampshire, Harehills WM Club, Leeds  
Chris Dunne, Harehills WM Club, Leeds  
Rae Forster Simpson, Prudhoe Social Club, Northumberland  
Janis Garnett, Burlington (Wath), South Yorkshire



### 21 Year Branch Award

Herbert Hurt, South Yorkshire Branch

### 25 Year Combined Service Award

Gordon Winn, Ferrybridge Progressive Club, Wakefield

### Long Service Award

James Petticrew, Harehills WM Club, Leeds  
Antony Dobb, Belle Isle WM Club, Leeds  
Trevor McCrum, Harboro Hill WMC, South Yorkshire  
Joseph Jobs, Boldon Colliery North Road SC, Durham



## CLASSIFIED ADVERTISING

ALTHOUGH the CIU has taken care to ensure that all advertisements are placed in good faith it accepts no liability for any advertisements in Club Journal. To place an advertisement in Club Journal contact Mike Lyon on (0191) 488 7142 or write to Club Journal, Unit 17, St Peter's Wharf, Newcastle NE6 1TZ. Fax: (0191) 275 2609. email: info@powdene.com

## SPEEDCLEAN

THE ULTIMATE WAREWASHING RANGE



Heavy duty DISH & GLASSWASHING MACHINES offering unrivalled standards in speed, efficiency, reliability and durability.

**FEATURES INCLUDE:**

- built-in water softener
- 45 second wash cycle
- energy-saving insulated panels
- automatic detergent and rinse-aid dispensers

finance options to suit - full guarantee - nationwide service support

**NELSON** 0800 592 833  
WWW.NELSONWASH.COM



### FRED BUTLIN CLUB ENTERTAINMENT AGENCY SAVES CIU MEMBERS MONEY.

SAVE MONEY ON ENTERTAINMENT WITH FRED CHEAPER PRICES - BEST SINGERS BANDS - COMEDIANS - FREE QUOTES

\*FREE OFFER YOUR OWN SOCIAL CLUB PHONE APP FOR YOUR MEMBERS PHONES\*FREE. EVERY CIU CLUB IN UK COVERED FOR ENTERTAINMENT AND CROWD PULLING IDEAS

EMAIL FRED@FREDBUTLIN.COM • WEB SITE WWW.FREDBUTLIN.COM  
SEE US ON YOUTUBE • OFFICE TEL 01543 898342 • FRED MOBILE 07961 048696

## Trent Pottery & Furniture

**BQ/2 Available in gold, black or silver frame in any fabric C shown below. From £14.30**

**BQ/7 Gold frame in any fabric C shown below. From £23.30**

**BQ/1 Available in gold, black or silver frame in any fabric C shown below. From £13.50**

**BQ/5 Gold or silver frame in any fabric C shown below. From £23.30**

150C 151C 152C 153C 154C

Email: sales@pubfurnitureuk.co.uk Web: www.trentpottery.co.uk  
Tel: 0116 2864911 Fax: 0116 2869030

## Style Seating

- \* Fluted aluminium frame
- \* Moulded seat foam
- \* Light weight
- \* 10 different fabric choices
- \* 5 different frame colours
- \* No visible fixings
- \* FREE DELIVERY\*\*
- \* UK manufactured
- \* 5 year structural warranty
- \* Tested to BS EN 15373:2007 (test Level 3 - Severe Use)

From £41.95



Uk Manufactured Furniture



Call for FREE 48 page brochure  
tel: 01945 580099 www.styleseating.co.uk

## PRIZE CROSSWORD

Every month we give five £10 prizes to a lucky five correct entrants.

### ACROSS

- No way out for the French! (3-2-3)
- Rasp, applied to timber pole. (4)
- Distress pets thrown around after a turn. (5)
- Seem due, in peculiar Furies. (9)
- Container costing nothing? - he owes no rent! (10)
- Right rodents, yet they get celebrity status! (4)
- Sinker in tacit agreement. (7)
- Meet - at a double sprint? (3,4)
- They're fishy dishes, said to be a pie from Ella. (7)
- Money orders - reputedly in black and white squares. (7)

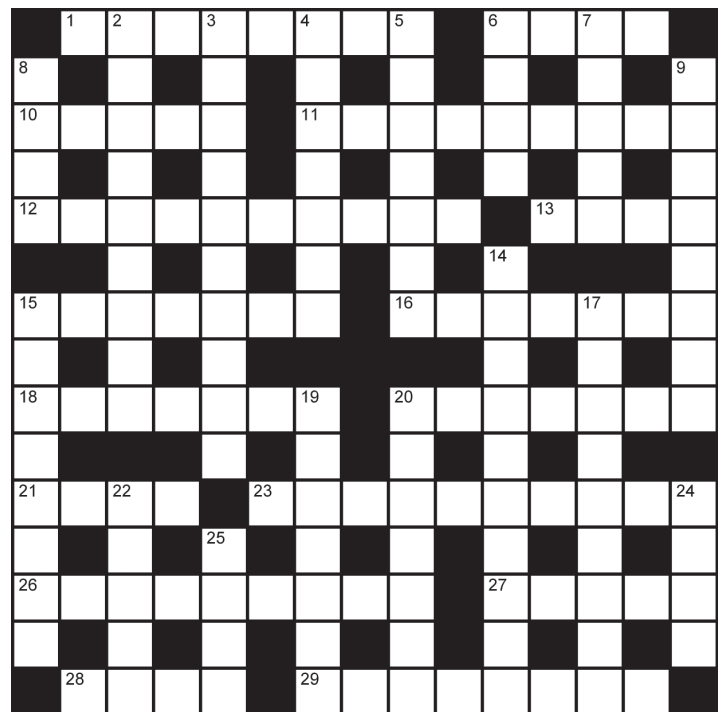
- Fool has model humour (4)
- Fuel used in fast action film? (4-6)
- Old camera accessory - a fancy plant food store? (5-4)
- Subaverage - bears out that set-up's hazy. (5)
- Exploit, said to be the stuff of legends. (4)
- Prenatal, turning out to be fatherly. (8)

### DOWN

- Sea-hunt a failure, as he finally does sword action. (9)
- Will he give you low, country advice? (5,5)
- That woman will take account of the varnish. (7)
- Come, per arrangement, to colleague. (7)
- Chanted about snag. (4)
- Self-less feudalists sorts out review. (5)
- Botch the warmer. (4)

- Steep, but not like a mountain - that's exorbitant. (8)
- Covert, yet quilted? (10)
- Stick with authority (not advice). (8)
- Aerial gun shot to pieces with nervous pain. (9)
- Winter Olympic event - where Eagles dare? (3-4)
- Live together with company practice. (7)
- Angry pirates lose their afterthought. (5)
- Inland Revenue - smooth! (4)
- It's a question of power, allegedly. (4)

Send your entry to Crossword, Powdene Publicity, Unit 17, St Peter's Wharf, Newcastle upon Tyne NE6 1TZ, to reach us by November 30th.



Name.....  
Address.....  
.....  
Club.....

## CROSSWORD SOLUTION

Congratulations to the five winners of our £10 Prize Crossword for September:  
Mrs P Eldson of Guide Post Club, Northumberland;  
Pauline Vincent of Twerton Liberal Club, Bath;  
Mike Meakin of Greasbrough WMC, Rotherham;  
Mrs E Whitehouse of Alveley WMC, Shropshire; and  
James Mariner of Lemington SC, Newcastle.





South Yorkshire Branch Secretary Ken Green presented team and Individual trophies to members of Hatfield Woodhouse Club in Doncaster, who were winners at our Northern Angling tournament. Pictured (left to right) are: Ken Green, Chris Day, Individual winner Nobby Winter, Andy Spick and Andy Baker.



### CHAMPIONS

Our new national snooker champion Rhydian Richards (right) is congratulated on his return to Merthyr Tydfil Labour Club by Bob Watkins, Chairman of the the Welsh Snooker & Billiards Association. Combined semi-finals and finals will be held for:  
 Individual Darts on 10 November at Darfield Road Club, South Yorks;  
 Individual Pool on 24 November at Bloomfield Club, Blackpool; and  
 Dominoes Straights on 1 December at Leicester Railwaymen's Club.

## FREE ONE MONTH TRIAL FOR CIU MEMBERS\*

### Do your members love racing?

Get every race live from 33 of the UK's top racecourses including 18 of the best Jumps courses.

Sign up to a month's free trial and receive:

- Every race live from the start of the Jumps season
- FREE race tickets
- FREE Point of Sale materials



Call 0870 351 8834 to start your free trial today

\*Terms and conditions apply. New customers only. Month free trial is subject to working Sky satellite equipment. Free month starts from the day your card is activated. Minimum six month term applies thereafter.



# CHEERS!

Something you'll be hearing a lot more of this Jumps season

We know you'd rather see empty glasses than an empty club.

Well, for the price of just a pint per day, a subscription to Racing UK can bring you live racing entertainment every day, meaning your members see top-quality racing and you see more empty glasses.

Call 0870 351 8834 to subscribe  
[www.racinguk.com/business](http://www.racinguk.com/business)

**RACING UK**

PURE RACING ENTERTAINMENT

Over 650 live meetings	175 free race tickets	No annual contract	No Sky subscription
------------------------	-----------------------	--------------------	---------------------

Terms and conditions apply

# CIU RACING CLUB



THE CIU Racing Club uses the bulk buying power of our 2,000 clubs to obtain special discounts from racecourses. You can make a booking by filling in the form at the foot of this page.

To obtain the discount we send all the forms to the racecourse together as one block booking and they will send you the tickets at your club a few days before the meeting. Tickets are sent to the club as otherwise anyone could buy them.

We need to receive your booking three weeks before the meeting otherwise we cannot guarantee you will receive the discount because late bookings do not save the courses any work.

To register your club as a member of the CIU Racing Club ring **Jean Garrett** on **(0191) 2650040**.

As well as receiving regular updates and the full list of offers you will receive a free copy of Club Journal. Remember that even if a meeting is not listed here you can obtain a party discount direct from the course. Satellite racing channel RACING UK is offering all CIU clubs a 30 per cent discount. For further information ring 0870 351 8834 or see opposite.

**A selection of offers are printed here. The full list has been sent to registered Racing Club members and can also be found on the CIU website.**

*(All offers Tattersalls unless stated otherwise)*

## Race Discounts

CARLISLE:.....	Sunday, 2nd December.....	£10 (normally £15)
LEICESTER:.....	Sunday, 2nd December.....	£9 (normally £16)
AINTREE:.....	Saturday, 8th December.....	£12 (normally £20)
KELSO:.....	Sunday, 9th December.....	£9 (normally £13)
CARLISLE:.....	Sunday, 16th December.....	£10 (normally £15)
ASCOT:.....	Saturday, 22nd December.....	£12 (normally £18)
HAYDOCK:.....	Saturday, 22nd December.....	£11 (normally £20)
LEICESTER:.....	Friday, 28th December.....	£9 (normally £16)
KELSO:.....	Saturday, 29th December.....	£9 (normally £13)
NEWBURY:.....	Saturday, 29th December.....	£16 (normally £20)
HAYDOCK:.....	Sunday, 30th December.....	£11 (normally £20)
KELSO:.....	Saturday, 2nd March (2013).....	£9 (normally £13)
KELSO:.....	Saturday, 23rd March (2013).....	£9 (normally £13)

### NORTHERN RACING - A DAY OUT FOR £10

Northern Racing, who operate Bath, Brighton, Chepstow, Ffos Las, Fontwell, Great Yarmouth, Hereford, Newcastle, Sedgfield and Uttoxeter Racecourses, are again offering their £10 across-the-board deal for Grandstand & Paddock tickets throughout 2012. The offer applies to all meetings with certain exemptions such as Plate Day, Fighting Fifth and Ladies Day at Newcastle; Midlands Grand National and Ladies Night at Uttoxeter; Welsh National Day at Chepstow; the Eastern Festival and Ladies Day at Great Yarmouth, August Festival at Brighton and the Ladies Day fixtures at Fontwell and Ffos Las.

*Fixtures for which the offer applies include:*

Wed, Dec 5:	Sedgfield	Uttoxeter
Hereford	Sun, Dec 16:	Sat, Dec 22:
Sat, Dec 8:	Hereford	Newcastle
Chepstow	Mon, Dec 17:	Mon, Dec 31:
Tues, Dec 11:	Ffos Las	Uttoxeter
Fontwell,	Fri, Dec 21:	

### Wetherby tops 1,000

This year's CIU National Raceday had already attracted more than a thousand racegoers as Club Journal went to press in late October.

It means the raceday has already raised more than £2,000 for our holiday and convalescent centre, Saltburn House, on the north Yorkshire coast, as the course and their caterers CGC Events are both donating £1 from each booking to the centre. Pride of place goes to Farsley WMC in Leeds, who are taking 233 members to the raceday.

Gaming and amusement suppliers Dransfields have again made the day possible by sponsoring a race at the meeting and we are also grateful to John Smith's, who have included five 50p discount beer coupons with each booking. John Smith's are part of Heineken UK, the Union's sole recommended supplier of beer and cider.

This year's event takes place on Saturday, November 17 and the course is again offering a package for £14 that includes entry to the exclusive CIU marquee, an Official Race Programme, a pie-and-pea lunch, five John Smith's 50p discount beer coupons and a £2 betting voucher – a saving of £12.95.

## CIU Racing Club Booking Form

Number of tickets required (minimum 6) \_\_\_\_\_ Price per ticket £ \_\_\_\_\_

Racecourse \_\_\_\_\_ Date of meeting: \_\_\_\_\_

Cheque enclosed for £ \_\_\_\_\_

(Made payable to racecourse involved).

Club: \_\_\_\_\_

Club Address: \_\_\_\_\_

Post code: \_\_\_\_\_

Contact Name: \_\_\_\_\_

Daytime telephone No: \_\_\_\_\_

Please send this booking form plus cheque (made payable to the appropriate racecourse) at least three weeks prior to meeting to:  
Jean Garrett, Club Journal, Unit 17, St. Peter's Wharf, Newcastle upon Tyne NE6 1TZ.

Membership of the CIU Racing Club is open to all CIU clubs and is completely FREE. To join fill in the Registration Form below and send it to Jean Garrett at Club Journal.

### REGISTRATION FORM

Club Name: \_\_\_\_\_

Address: \_\_\_\_\_

Post code: \_\_\_\_\_

Contact Name: \_\_\_\_\_

Daytime Telephone No: \_\_\_\_\_

We organise: Occasional \_\_\_\_\_

Regular \_\_\_\_\_ race outings.

Average number of members taking part: \_\_\_\_\_

Most members prefer: Flat \_\_\_\_\_ National Hunt \_\_\_\_\_

The furthest we would travel to a race meeting is: 50 miles \_\_\_\_\_

100 miles \_\_\_\_\_ Further than 100 miles \_\_\_\_\_

Courses of most interest to us: \_\_\_\_\_

Please return to: Jean Garrett, Club Journal, UNIT 17, ST PETER'S WHARF, NEWCASTLE UPON TYNE NE6 1TZ.

### BUY YOUR OWN COPY. . . and pay less

Here's your chance to have your own personal copy of *Club Journal* for less than you'd pay for it at the club.

Fill in this form to obtain a year's supply of *Club Journal* for £7.50. This means that not only will we send you your copy post-free to your home if you wish, but two of the 12 editions will be yours for FREE.

Please send me a year's supply of *Club Journal*. I enclose a cheque for £7.50 made payable to the Club & Institute Union.

Name: \_\_\_\_\_

Home Address: \_\_\_\_\_

Postcode: \_\_\_\_\_

Please send your order to Club Journal, Unit 17, St Peter's Wharf, Newcastle upon Tyne NE6 1TZ.

# Sports teams lift reborn Band Club



## Darts and dominoes girls put Duple top

The women of Duple Club in Blackpool have swept all before them winning nine trophies for darts and dominoes this summer. Pictured (left to right) with some of their trophies are: Dee Hardy, Sue Kay, captain Jennifer Andrew, Margaret Craven, Esther Bridge, Fran Stockwell, Dorothy Southall and Angela Pritchard. Not pictured are Jane Tomlinson and Elsie Webb.

The trophies the girls won are:

- Monday darts doubles winners: Fran and Margaret;
- Monday dominoes doubles winners: Margaret and Elsie; runners-up Esther and Jane;
- Monday darts team knockout winners: Duple B
- Monday darts league runners-up: Duple B
- Wednesday darts doubles runners-up: Fran and Margaret;
- Theresa Gibson Knockout winner: Margaret;
- Captain's winner: Jennifer;
- M. Plumb winner: Jennifer

A club that was burned down six years ago has not only risen from the flames, its sports teams have been on fire, winning five separate titles this year.

Rushden Town Band Club was destroyed by fire over the New Year holiday in 2006 but reopened in new premises a mile away after several battles with East Northamptonshire Council. South East Midlands Branch Executive member Trevor Parker, who is Vice-President of the club, said: "It's been a really difficult time for us but we are really excited to be back on our feet and to be having so much success with our sports teams. We've had to build the club back up from scratch and we now have a membership of 500 and are continuing to grow."



Pictured are Earsl Barton & District Skittles Summer league division three champions (left to right): Gareth Tennant, Graham Taylor, Hannah Thomas, captain Sam Thomas, Alan Thomas and Tony Bedford. Not on the picture are Steven Limage and Fred Tyman.

**DOES YOUR PAYROLL PROVIDER CARE ABOUT YOUR CLUB?**

**WE DO.**



We provide a personal, professional payroll processing service for Clubs at a highly attractive cost.

Please contact **Lynn Barnfather** at RHK on **0191 4781513** for further details.

The club has also won the:

- South East Midlands Branch Fishing;
- Rushden & District Skittles Pairs KO Cup;
- East Northants Pool League Division Four;
- The Three Shires Skittles League Fours.

Pictured are another successful skittles team, Merv's Magicians (left), the winners of the Tetbury United Services Club's summer skittles league and (below) the Gloucestershire club's pool doubles champions Daniel Smith (left) and Michael Davis. Both photographs were taken by club member Brenda Freeman.

